

INTRODUCING

izervay[™]
(avacincaptad pegol
intravitreal solution) 2 mg



A NEW TREATMENT FOR

Geographic Atrophy (GA)

IZERVAY slows GA progression by directly targeting a key source of retinal cell death and loss of photoreceptors

IMPORTANT SAFETY INFORMATION

What is IZERVAY?

IZERVAY (avacincaptad pegol intravitreal solution) is a prescription eye injection, used to treat geographic atrophy (GA), the advanced form of dry age-related macular degeneration (AMD).

What is the most important information I should know about IZERVAY?

Do NOT receive IZERVAY if you:

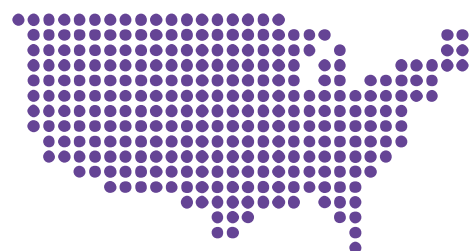
- Have an infection in or around your eye
- Have active swelling in or around your eye that may include pain and redness

**Please see Important Safety Information throughout this brochure.
[Click here for full Prescribing Information.](#)**



You are NOT alone

GA has a serious impact on millions of people like you.



1.5 million people in the US have GA



1 out of 5 cases of legal blindness in North America are due to GA

IMPORTANT SAFETY INFORMATION (CONT'D)

IZERVAY can cause serious side effects:

- Eye injections like the one for IZERVAY can cause an eye infection (endophthalmitis) or separation of layers of the retina (retinal detachment).
- Call your healthcare provider right away if you have redness of the eye, eye pain, increased discomfort, worsening eye redness, blurred or decreased vision, an increased number of small specks floating in your vision, flashes of light, or increased sensitivity to light.
- There is a risk of developing wet AMD with IZERVAY. You should report any symptoms (visual distortions such as straight lines seeming bent, deterioration in vision, dark spots, loss of central vision) to your healthcare provider to monitor.
- IZERVAY may cause a temporary increase in eye pressure within minutes after the injection. Your healthcare provider will monitor this after each injection.

Your treatment journey starts here

Living with GA may present challenges, especially with changing vision. IZERVAY is a new medicine proven to slow the progression of GA. Slowing GA progression may help preserve vision longer.

We want to extend our support as you begin your treatment journey with IZERVAY and encourage you to stay vigilant about your vision, surround yourself with a support network, and partner with your doctor to stay one step ahead of GA.

Treatment with IZERVAY is just the beginning.

IMPORTANT SAFETY INFORMATION (CONT'D)

Before receiving IZERVAY tell your healthcare provider about all of your medical conditions including if you:

- o Have a history of seeing flashes of light or small specks floating in your vision and if you have a sudden increase of size and number of these specks.
- o Have high pressure in the eye or if you have glaucoma.
- o Are pregnant or breastfeeding, think you may be pregnant, or are planning to have a baby, ask your doctor for advice before taking this medicine.
- o Are taking any medications, including prescription and over-the-counter medicines, vitamins, and herbal supplements. Tell your healthcare provider about any medicine you take.

Please see Important Safety Information throughout this brochure. [Click here for full Prescribing Information.](#)

GA is an advanced form of dry age-related macular degeneration (AMD)

AMD is a progressive disease that happens in 3 stages: early, intermediate, and advanced.

Early AMD

Diagnosed by the presence of small drusen, which are waste deposits that form in the back of the eye. People with early AMD typically do not experience vision loss.

Intermediate AMD

Diagnosed when drusen increase in number and/or size. Intermediate AMD may cause some vision loss but most people will not have obvious symptoms.

Advanced AMD

In addition to drusen, people with advanced AMD experience vision loss from either excess fluid and blood (wet AMD) or death of cells (advanced dry AMD, also known as GA).

IZERVAY is a treatment for GA, the advanced form of dry AMD.

IMPORTANT SAFETY INFORMATION (CONT'D)

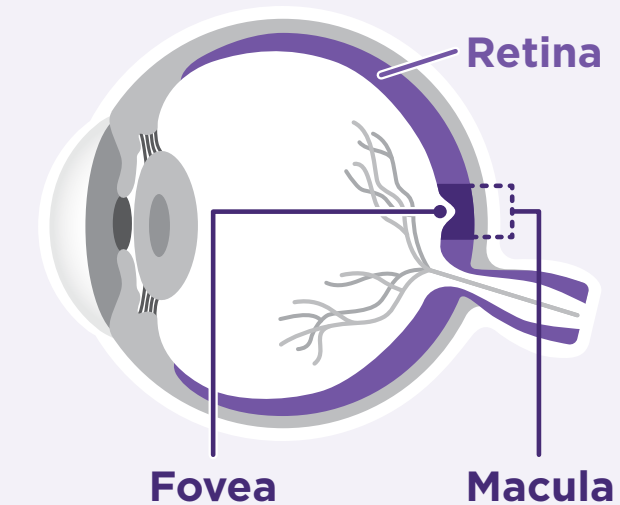
What should I avoid while receiving IZERVAY?

- Your vision may be impaired after receiving an eye injection or after an eye exam. Do not drive or use machinery until your vision has recovered sufficiently.

GA is a serious condition that leads to irreversible vision loss

GA causes cells in your retina to die, also known as atrophy. This creates patches of dead cells called lesions that cause vision loss.

Side view of the eye



Retina

Senses light and converts it into signals that your brain turns into images.

Macula

The center of your retina that helps you see detail.

Fovea

Responsible for your sharpest and clearest vision.

IMPORTANT SAFETY INFORMATION (CONT'D)

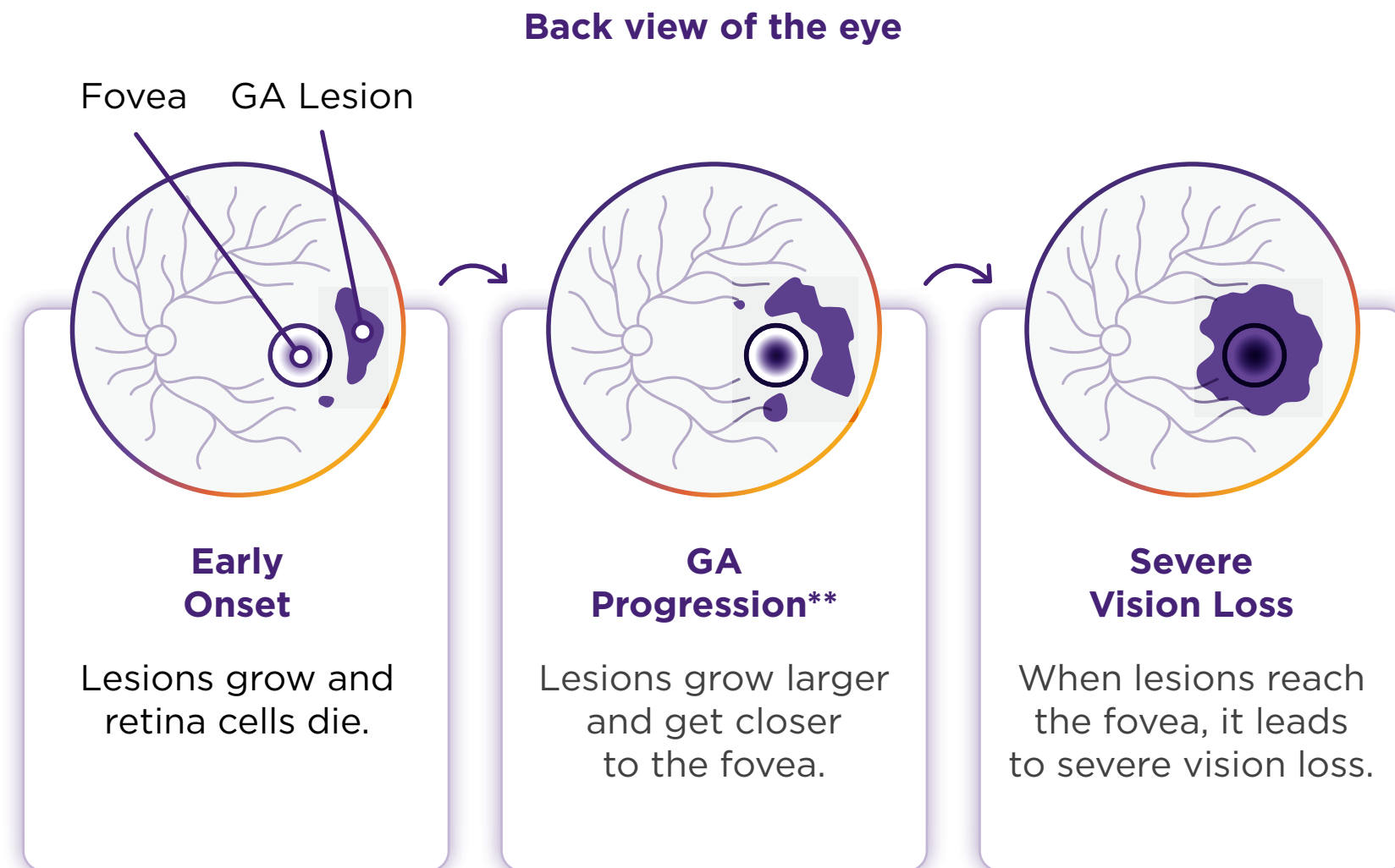
What are the most common side effects of IZERVAY?

- Blood in the white of the eye
- Increase in eye pressure
- Blurred vision
- Wet age-related macular degeneration

Please see Important Safety Information throughout this brochure. [Click here for full Prescribing Information.](#)

GA can progress faster than you think

In as few as 2.5 years, GA can spread to the fovea, where vision is sharpest and clearest.*



Even if your symptoms are subtle, or you have no symptoms at all, GA may still be progressing.

*Average time since diagnosis of GA.

**GA progression is different for everyone. Some people may experience slower or faster GA progression and changes in vision.

IMPORTANT SAFETY INFORMATION (CONT'D)

These are not all the possible side effects of IZERVAY. Tell your healthcare provider about any side effect that bothers you or that does not go away. Call your healthcare provider for medical advice about side effects. You may report side effects to the FDA at **1-800-FDA-1088** or **www.fda.gov/medwatch**.

GA affects everyone differently and can be unpredictable

For many people, GA progresses quickly and can begin to interfere with their lifestyle and independence.

67%

of people with GA lost the ability to drive in 1.6 years



50%

of people with GA lost 2 lines of vision on an eye chart within 2 years

ONVSR
KDNRO
~~ZKCSV~~
~~DVOHC~~

IMPORTANT SAFETY INFORMATION

What is IZERVAY?

IZERVAY (avacincaptad pegol intravitreal solution) is a prescription eye injection, used to treat geographic atrophy (GA), the advanced form of dry age-related macular degeneration (AMD).

What is the most important information I should know about IZERVAY?

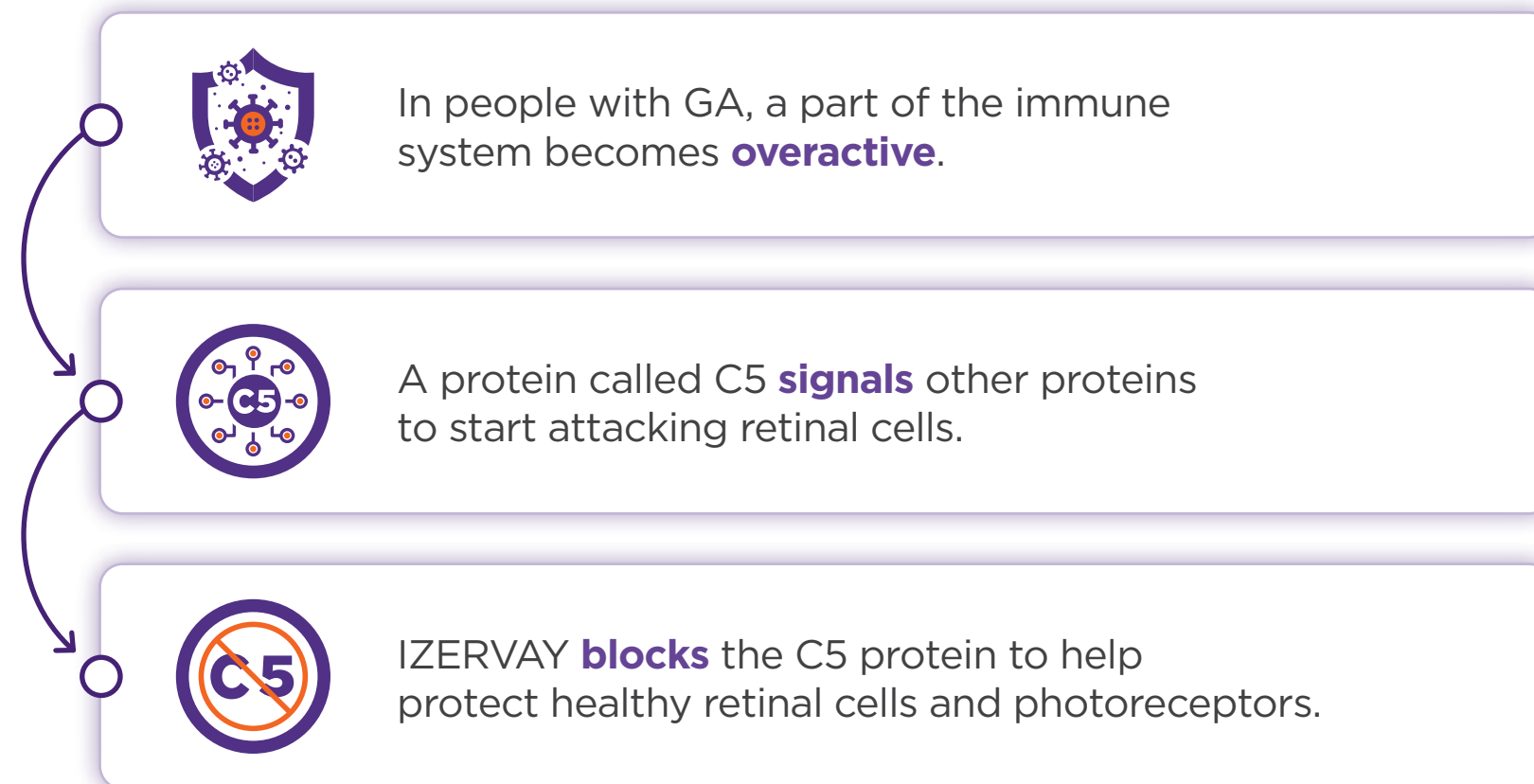
Do NOT receive IZERVAY if you:

- Have an infection in or around your eye
- Have active swelling in or around your eye that may include pain and redness

Please see Important Safety Information throughout this brochure. [Click here for full Prescribing Information.](#)

Only IZERVAY directly targets C5, a key source of retinal cell death and loss of photoreceptors

How does IZERVAY work?



IMPORTANT SAFETY INFORMATION (CONT'D)

IZERVAY can cause serious side effects:

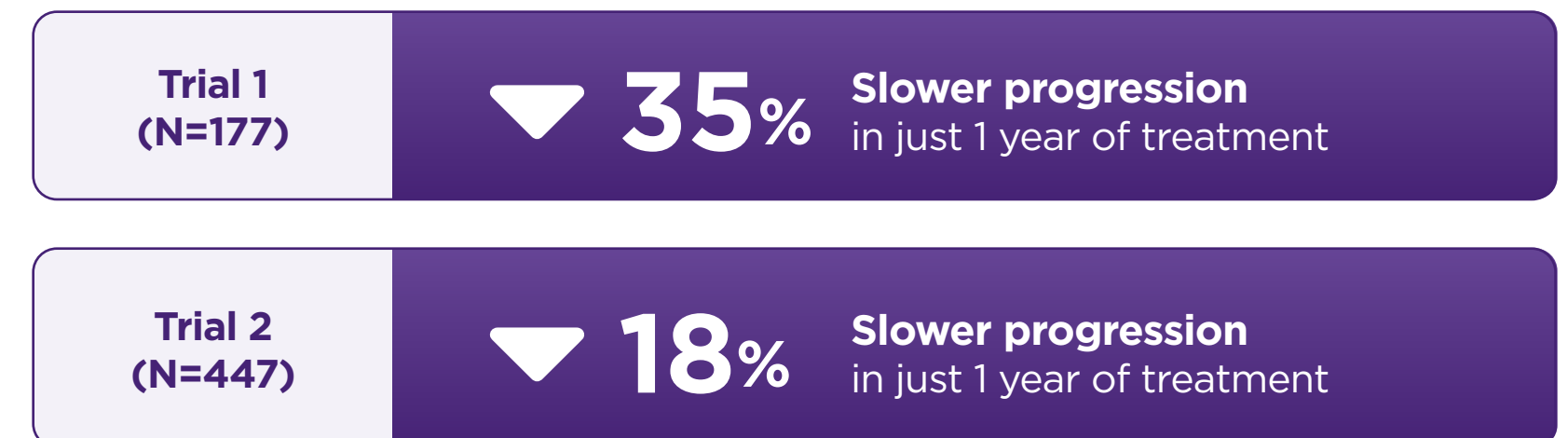
- Eye injections like the one for IZERVAY can cause an eye infection (endophthalmitis) or separation of layers of the retina (retinal detachment).
- Call your healthcare provider right away if you have redness of the eye, eye pain, increased discomfort, worsening eye redness, blurred or decreased vision, an increased number of small specks floating in your vision, flashes of light, or increased sensitivity to light.
- There is a risk of developing wet AMD with IZERVAY. You should report any symptoms (visual distortions such as straight lines seeming bent, deterioration in vision, dark spots, loss of central vision) to your healthcare provider to monitor.
- IZERVAY may cause a temporary increase in eye pressure within minutes after the injection. Your healthcare provider will monitor this after each injection.

IZERVAY is proven to slow GA progression

Slowing GA progression may help to preserve vision longer.

IZERVAY was evaluated in 2 clinical trials of over 700 people with GA. In both trials, GA progression was slower for people receiving IZERVAY compared to those that were not treated.

In just one year, compared to those that did not receive treatment, IZERVAY slowed GA progression by:



IMPORTANT SAFETY INFORMATION (CONT'D)

Before receiving IZERVAY tell your healthcare provider about all of your medical conditions including if you:

- o Have a history of seeing flashes of light or small specks floating in your vision and if you have a sudden increase of size and number of these specks.
- o Have high pressure in the eye or if you have glaucoma.
- o Are pregnant or breastfeeding, think you may be pregnant, or are planning to have a baby, ask your doctor for advice before taking this medicine.
- o Are taking any medications, including prescription and over-the-counter medicines, vitamins, and herbal supplements. Tell your healthcare provider about any medicine you take.

Please see Important Safety Information throughout this brochure. [Click here for full Prescribing Information.](#)

IZERVAY was well tolerated in 2 clinical trials

Less than 2% of people stopped treatment due to side effects.

The most common side effects experienced at 12 months were:

	Treated with IZERVAY (n=292)	Not treated with IZERVAY (n=332)
Blood in the white of the eye	13%	9%
Increased eye pressure	9%	1%
Blurred vision*	8%	5%
Wet AMD	7%	4%
Eye pain	4%	3%
Spots in vision	2%	<1%
Eyelid Inflammation	2%	<1%

*Blurred vision includes visual impairment and/or loss of sharpness or detail at a distance.

These are not all the possible side effects of IZERVAY. Talk to your doctor if you think you might be experiencing side effects.

IMPORTANT SAFETY INFORMATION (CONT'D)


What should I avoid while receiving IZERVAY?

- Your vision may be impaired after receiving an eye injection or after an eye exam. Do not drive or use machinery until your vision has recovered sufficiently.

Starting your treatment journey with IZERVAY


IZERVAY is a monthly eye injection given in office by your doctor.

Here is what you can expect before, during, and after the procedure.




Before

Your doctor will clean and numb your eye to help reduce discomfort.



During

The procedure usually takes a few seconds. You may feel pressure in the eye, but little to no pain.



After

You may experience some blurry vision, an increase in eye pressure, and/or mild irritation.

It's important to follow your doctor's post-treatment care instructions.

To receive the full benefit of IZERVAY, you should follow your doctor's recommendation for continuous treatment.

IMPORTANT SAFETY INFORMATION (CONT'D)

What are the most common side effects of IZERVAY?

- Blood in the white of the eye
- Increase in eye pressure
- Blurred vision
- Wet age-related macular degeneration

Please see Important Safety Information throughout this brochure. [Click here for full Prescribing Information.](#)

Financial Assistance Programs

If you need help with the cost of IZERVAY, the IZERVAY My WaySM program may be able to help.



Our patient support program is designed to meet the unique needs of eligible patients. Whether you have commercial insurance, insurance that doesn't cover IZERVAY, are uninsured, or have government-issued insurance (such as Medicare), help may be available.



Speak with your doctor to see if you are eligible for IZERVAY financial assistance programs or call **1-888-C5MYWAY (1-888-256-9929)**

IMPORTANT SAFETY INFORMATION (CONT'D)

These are not all the possible side effects of IZERVAY. Tell your healthcare provider about any side effect that bothers you or that does not go away. Call your healthcare provider for medical advice about side effects. You may report side effects to the FDA at **1-800-FDA-1088** or **www.fda.gov/medwatch**.

What is IZERVAY?

IZERVAY (avacincaptad pegol intravitreal solution) is a prescription eye injection, used to treat geographic atrophy (GA), the advanced form of dry age-related macular degeneration (AMD).

What is the most important information I should know about IZERVAY?

Do NOT receive IZERVAY if you:

- Have an infection in or around your eye
- Have active swelling in or around your eye that may include pain and redness

Please see Important Safety Information throughout this brochure.

[Click here for full Prescribing Information.](#)

IZERVAY is proven to slow GA progression

Up to
35% Slower
progression

Slowed lesion growth by up to 35% in just one year.

In 2 clinical trials of over 700 people, IZERVAY slowed GA progression between 18%-35% in one year, compared to those that were not treated.



Only IZERVAY targets C5
Blocking C5 helps protect retinal cells
and photoreceptors.

When treating GA, every month matters

The earlier you act, the more
you may protect.



Visit [IZERVAY.com](https://www.izervay.com) to learn more.

IMPORTANT SAFETY INFORMATION (CONT'D)

IZERVAY can cause serious side effects:

- Eye injections like the one for IZERVAY can cause an eye infection (endophthalmitis) or separation of layers of the retina (retinal detachment).
- Call your healthcare provider right away if you have redness of the eye, eye pain, increased discomfort, worsening eye redness, blurred or decreased vision, an increased number of small specks floating in your vision, flashes of light, or increased sensitivity to light.
- There is a risk of developing wet AMD with IZERVAY. You should report any symptoms (visual distortions such as straight lines seeming bent, deterioration in vision, dark spots, loss of central vision) to your healthcare provider to monitor.
- IZERVAY may cause a temporary increase in eye pressure within minutes after the injection. Your healthcare provider will monitor this after each injection.

IMPORTANT SAFETY INFORMATION (CONT'D)

Before receiving IZERVAY tell your healthcare provider about all of your medical conditions including if you:

- o Have a history of seeing flashes of light or small specks floating in your vision and if you have a sudden increase of size and number of these specks.
- o Have high pressure in the eye or if you have glaucoma.
- o Are pregnant or breastfeeding, think you may be pregnant, or are planning to have a baby, ask your doctor for advice before taking this medicine.
- o Are taking any medications, including prescription and over-the-counter medicines, vitamins, and herbal supplements. Tell your healthcare provider about any medicine you take.

Please see Important Safety Information throughout this brochure.
[Click here for full Prescribing Information.](#)



IMPORTANT SAFETY INFORMATION (CONT'D)

What should I avoid while receiving IZERVAY?

- Your vision may be impaired after receiving an eye injection or after an eye exam. Do not drive or use machinery until your vision has recovered sufficiently.

IMPORTANT SAFETY INFORMATION (CONT'D)

What are the most common side effects of IZERVAY?

- Blood in the white of the eye
- Increase in eye pressure
- Blurred vision
- Wet age-related macular degeneration

These are not all the possible side effects of IZERVAY. Tell your healthcare provider about any side effect that bothers you or that does not go away.

Call your healthcare provider for medical advice about side effects. You may report side effects to the FDA at **1-800-FDA-1088** or **www.fda.gov/medwatch**.

The product information provided is intended only for residents of the US. The health information contained herein is provided for educational purposes only and is not intended to replace discussions with a healthcare provider.

Please see Important Safety Information throughout this brochure.
[Click here for full Prescribing Information.](#)